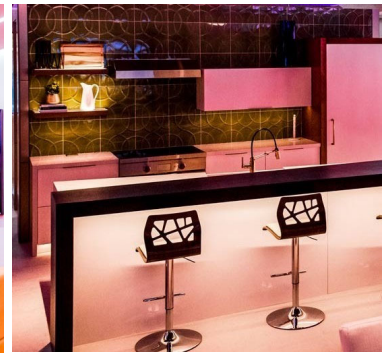
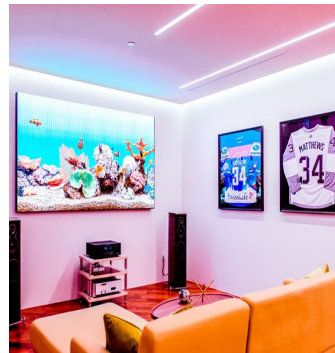
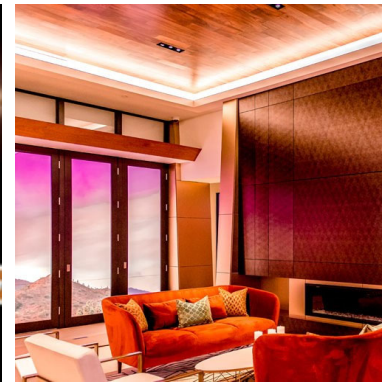
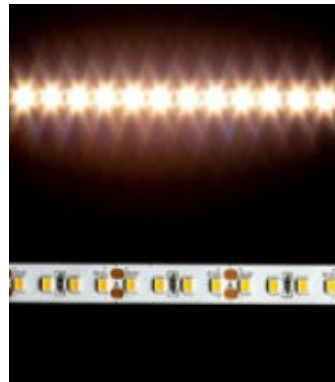


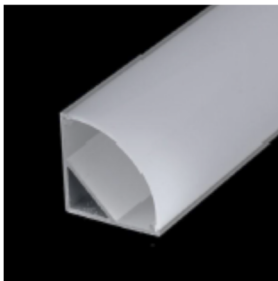
APPLICATIONS

The Performance Line of LED Strip Lighting is designed to illuminate architectural features, architectural coves, wall niches, accent features and back lighting elements in interior applications.

- Power: 3 Watts/Foot
- CCT: 2700k, 3000k, 5000k
- CRI: 90+
- Beam Angle: 120 Degrees
- Input Current: 4167 mA
- Input Voltage: 12~24V DC
- LED Spacing: .33 Inch
- Cutting Segments: 1.31 Inch
- Dimensions (Inch): 0.08H x 0.39W
- Life: 50,000 Hours
- Warranty: 3 Years Limited
- Listing: UL Listed
- IP Rating: IP20



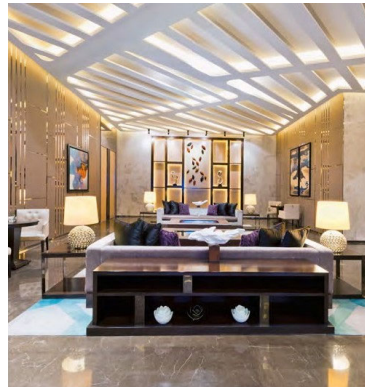
NOTE: Provide the total run lengths in the product specification below.



CORNER CHANNEL #CS108



FLAT CHANNEL #CS105



CCT LUMEN SCHEDULE						
LED CCT		2700K	3000K	4000K	5000K	6500K
12V INPUT	LUMENS/FOOT	124	123	126	132	125
24V INPUT	LUMENS/FOOT	135	135	140	126	135

PRODUCT SPECIFICATION

MODEL	DIMMING	CCT	INPUT VOLTAGE	TRACK SECTIONS	LENS	OPTIONS	OVERALL LENGTH	LED PATTERNS
BL2835								

SAMPLE SPECIFICATION: BL2835-1-3000K-1-S-SL-RD-15 FEET-10 FEET-RP

0 - NO DIMMING	2700K	1 - 120V/24V	N - NO TRACK	NL - NO LENS	RD - REMOTE DRIVER REQUIRED	PROVIDE THE TOTAL LENGTHS OF EACH RUN	STR - STRAIGHT RUN
1 - 0-10V DIMMING	3000K	2 - 277V/24V	S - STRAIGHT FLAT SECTIONS #CS105	SL - STRAIGHT FLAT LENS	FC - FACTORY INSTALLED ANGLE CONNECTORS		RT - RIGHT TURN RUN
2 - MLV MAGNETIC LOW VOLTAGE	4000K	3 - 120V/12V	S45 - STRAIGHT 45° SECTIONS #CS108	S45 - STRAIGHT 45° LENS			LT - LEFT TURN RUN
3 - ELV ELECTRONIC LOW VOLTAGE	5000K	4 - 277V/12V					RP - RECTANGLE PATTERN
4 - PWM PULSE WIDTH MODULATION	6500K						SP - SQUARE PATTERN