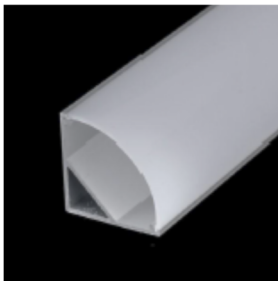
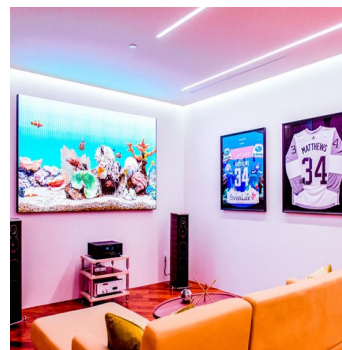


### APPLICATIONS

The Performance Line of LED Strip Lighting with Protective Cover is designed to illuminate architectural features, architectural coves, wall niches, accent features and back lighting elements in exterior and interior applications.

- Power: 3 Watts/Foot
- CCT: 2700k, 3000k, 4000k, 5000k, 6500k
- CRI: 80+
- Beam Angle: 120 Degrees
- Input Voltage: 12~24V DC
- LED Spacing: .31 Inch
- Cutting Segments: 2.46 Inch
- Dimensions (Inch): 0.08H x 0.39W
- Life: 50,000 Hours
- Warranty: 3 Years Limited
- Listing: UL Listed
- IP Rating: IP65

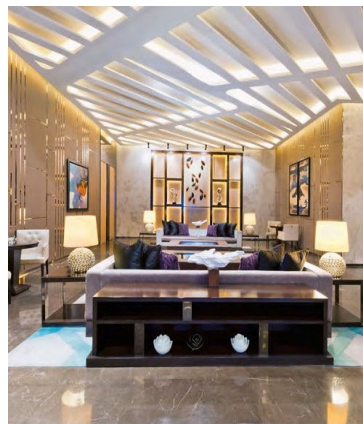
NOTE: Provide the total run lengths in the product specification below.



CORNER CHANNEL #CS108  
.63" W x .63" H





FLAT CHANNEL #CS105  
.77" W x .82" H



CCT LUMEN SCHEDULE						
LED CCT		2700K	3000K	4000K	5000K	6500K
12V INPUT	LUMENS/FOOT	124	123	126	132	125
24V INPUT	LUMENS/FOOT	135	135	140	126	135

### PRODUCT SPECIFICATION

MODEL	DIMMING	CCT	INPUT VOLTAGE	TRACK SECTIONS	LENS	OPTIONS	OVERALL LENGTH	LED PATTERNS
BL2835PC								
<b>SAMPLE SPECIFICATION: BL2835PC-1-3000K-1-S-SL-RD-15 FEET-10 FEET-RP</b>								
0 - NO DIMMING	2700K	1 - 120V/24V	N - NO TRACK	NL - NO LENS	RD - REMOTE DRIVER REQUIRED	PROVIDE THE TOTAL LENGTHS OF EACH RUN    AN AMERICAN COMPANY	STR - STRAIGHT RUN	
1 - 0-10V DIMMING	3000K	2 - 277V/24V	S - STRAIGHT FLAT SECTIONS #CS105	SL - STRAIGHT FLAT LENS	FC - FACTORY INSTALLED ANGLE CONNECTORS		RT - RIGHT TURN RUN	
2 - MLV MAGNETIC LOW VOLTAGE	4000K	3 - 120V/12V	S45 - STRAIGHT 45° SECTIONS #CS108	S45 - STRAIGHT 45° LENS			LT - LEFT TURN RUN	
3 - ELV ELECTRONIC LOW VOLTAGE	5000K	4 - 277V/12V					RP - RECTANGLE PATTERN	
4 - PWM PULSE WIDTH MODULATION	6500K						SP - SQUARE PATTERN	