

LunaLuce 2.0

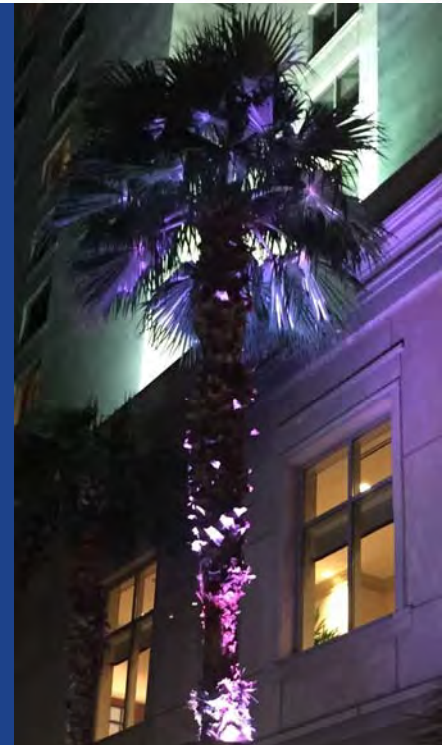
LED LANDSCAPE LIGHTING



FEATURES

Architectural LED Landscape Light Fixture with horizontal and vertical adjustable features and machined from a high-grade aluminum billet.

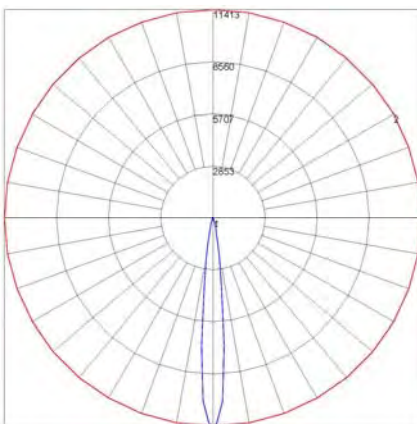
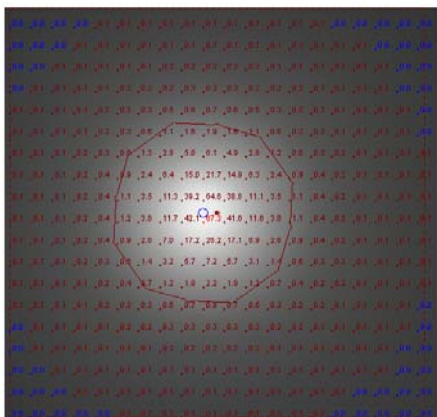
- Brilliant, high lumen 10.61 watt LED fixtures
- 715 lumens (67 lm / watt)
- 2750K, 3000K, 4000K & narrow-band Amber color temperatures
- Interchangeable optics, 10°, 30° and 60°
- Cree High Output XP-G2 LED diodes
- IP65 Lights / UL Components
- High quality #5052-H32 Marine Alloy with Stainless Steel Screws
- Photometrics: ies files available upon request
- 90° Vertical Adjustability from the Horizontal Adjustment Point
- 360° Horizontal Adjustability Around a Fixed Mounting Connection
- 5 year limited warranty
- RGB & RGBW lighting, DMX Controls—Optional
- Brightness settings—Optional



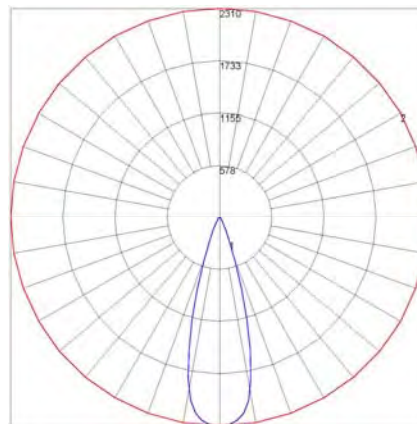
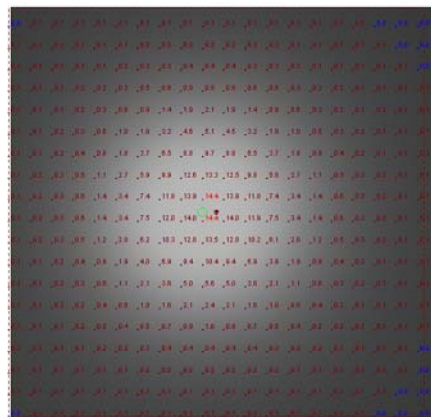


LunaLuce 2.0 Plus lighting fixtures are built specifically for landscape and building mount applications where lighting control and product durability is required. Refer to the product Specifications for catalog information and available options.

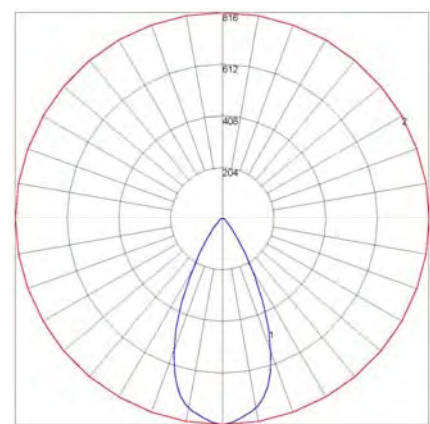
PHOTOMETRIC DATA



Optic Distribution: 10°
Maximum Candela: 11,413



Optic Distribution: 30°
Maximum Candela: 11,413



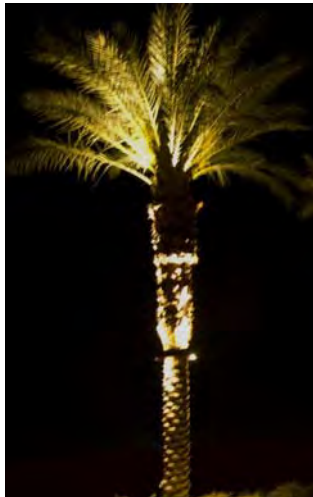
Optic Distribution: 60°
Maximum Candela: 11,413

LunaLuce 2.0

LED LANDSCAPE LIGHTING

PRODUCT SPECIFICATION

MODEL	WATTAGE	OPTICS	CCT	INPUT VOLTAGE / TRANSFORMER	COLOR	MOUNTING	OPTIONAL
LL2	11						
SAMPLE SPECIFICATION: LL2-11-30-3000K-1-BNZ-CB-STD							
	10 - 10°	2700K	1 - 120 VOLT	BLK - BLACK	CB - CONCRETE BASE	BC - BRIGHTNESS CONTROLLER	RGB OR RGBW
	30 - 30°	3000K	2 - 120/12V TRANSFORMER	BG - BEIGE	O - OTHER	HGL- HALF SHIELD	DMX- DMX CONTROLLER
	60 - 60°	4000K	3 - NO TRANSFORMER	BNZ - BRONZE		FGL- FULL SHIELD	AMB- AMBER CCT
						STD- NO SHIELD	


BLK
BLACK

BNZ
BRONZE

BG
BEIGE

OPTIONAL BRIGHTNESS SETTINGS



FIELD ADJUSTABLE

0	-----	100%
1	-----	75%
2	-----	50%
3	-----	25%

