


Signature at PGA West, La Quinta, California

FEATURES

The “Stella” LED Palm Tree Lighting products features an architectural round or square frame to conceal all light fixtures and wiring components while providing exceptional illumination on palm fronds and areas below the palm tree.

Eliminates clutter of exposed lighting fixtures hanging from palm trees.

- Brilliant, high lumen 11 watt LED fixtures
- 715 lumens each light fixture (65 lm / watt)
- CCT: 2700K, 3000K, 4000K & 585-595 nm narrow-band Amber
- Interchangeable optics, 10 °, 30 ° and 60 °
- Short or Long Bezel shield
- Max. candlepower: 11.2 CP (10 °), 2.3 CP (30 °) and .8 CP (60 °)
- Cree High Output XP-G2 LED diodes
- Dimming: TRIAC / Phase Dimming (MLV / ELA)
- IP65 Lights / IP68/UL94-VO Connectors / UL Recognized Components
- High quality #5052-H32 Marine Alloy or #304 Marine Grade Stainless Steel
- Multiple frame sizes for all types of palm trees
- Permanent mounting brackets with easy field leveling capabilities
- “Will Not Hurt or Damage a Palm Tree” as documented by a Certified Arborist
- 5 year limited warrantee

Available Options:

- RGBW lighting, DMX Controls, Constant Current Decoder
- Surge Protection, Weatherproof GFI Receptacle, Exterior Flood Light, HEX Louver
- LED Intensity is field adjustable with 4 settings: 100%, 75%, 50%, 25%



“The Stella offers a patent pending palm tree lighting solution that conceals lighting behind a round or square frame”

Ty Price, ALSA
Peridian International

“The Stella reduces light fixture clutter on palm trees during the day while providing intense and effective lighting at night”

Ronald Gregory, ASLA
RGA Landscape Architects



United States Patent



STELLA frames are built specifically for project trees. Refer to the frame sizing chart and make frame selections based on the tree diameters. Frames are permanently mounted to the tree using a unique adjustable mounting bracket.

STELLA palm tree Lighting are dimmable and can be connected with the project dimming system, TRIAC / Phase Dimming (MLV / ELV). RGBW lighting are furnished with constant current decoders for control with project furnished DMX Controllers. DMX Controllers are also available as an option by Bradley Lighting. Bradley Lighting will provide project planning and diagrams for RGBW projects as an option.

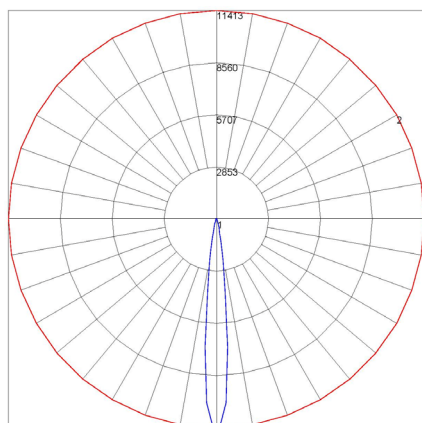
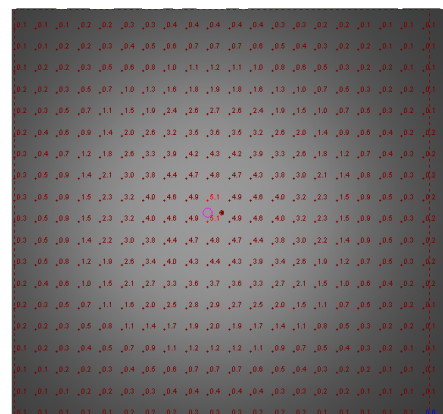
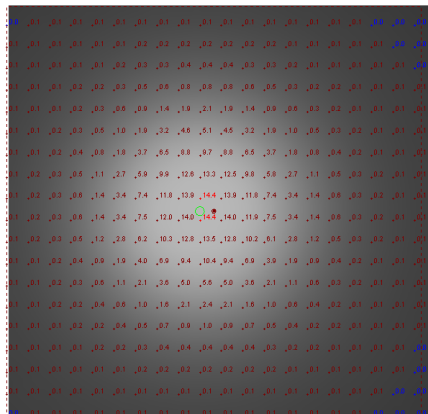
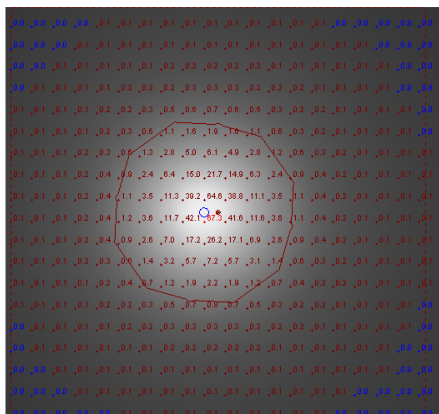


United States Patent

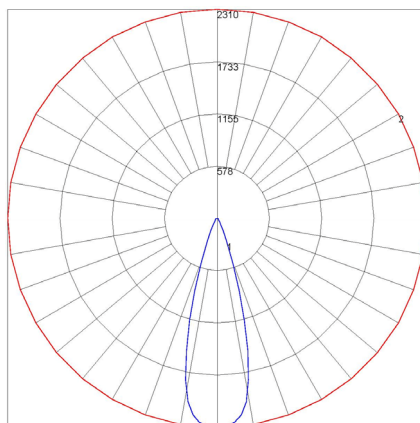


STELLA frames are available in square & round and are specifically constructed for each tree size. Refer to the specification sheet to select fixture configurations, optics, kelvin temperatures and options. Frames are designed to hold up to eight (8) LED lights with internally or remote transformers. In special conditions and external light can be specified to meet special lighting requirements.

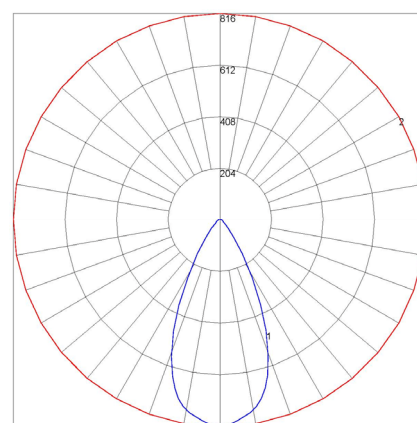
PHOTOMETRIC DATA



Optic Distribution: 10°
Maximum Candela: 11,413 cd



Optic Distribution: 30°
Maximum Candela: 2,310 cd



Optic Distribution: 60°
Maximum Candela: 800 cd



AN AMERICAN
COMPANY

United States Patent

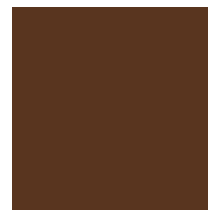
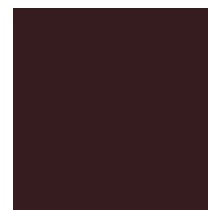
PRODUCT SPECIFICATION

| STELLA FRAME | FRAME TYPE | NUMBER OF UP / DOWN LIGHTS | UP LIGHTING | | DOWN LIGHTING | | FRAME SIZE CODE | INPUT VOLTAGE / TRANSFORMER | FRAME COLOR | OPTIONS |
|--|-------------------------------|----------------------------------|----------------------|-------------------|----------------------|---------------------|---|-------------------------------------|----------------|--|
| | | | OPTICS | UP LIGHT COLOR | OPTICS | DOWN LIGHT COLOR | | | | |
| | | | | | | | | | | |
| Sample Specification: R-A-4/2-10-2700K-60-2700K-R4-2-DB- | | | | | | | | | | |
| R - ROUND FRAME | A - ALUMINUM FRAME | ___ / ___ | 10 - 10 ⁰ | 2700K | 10 - 10 ⁰ | 2700K | SELECT FRAME CODE FROM THE SIZING CHART | 1 120/12V REMOTE TRANSFORMER | FB | RECEPTACLE HEX LOUVER / LONG BEZEL |
| S - SQUARE FRAME | SS - STAINLESS STEEL FRAME | 4 / 2 | 30 - 30 ⁰ | 3000K | 30 - 30 ⁰ | 3000K | | 2 120/12V INTREGAL TRANSFORMER | DB | EXTERIOR FLOOD LONG BEZEL |
| | | 3 / 3 | 60 - 60 ⁰ | 4000K | 60 - 60 ⁰ | 4000K | | 3 TRANSFORMER BY OTHERS - REMOTE | DBH | SURGE PROTECTION DESIGN OPTION |
| | | 3 / 2 | | OPTION RGBW | | OPTION RGBW | | 4 OTHER VOLTAGE | LBH | DMX CONTROLLER OTHER |

STELLA FRAME SIZES

| ROUND TREE FRAME CODES | | |
|------------------------|-------------------|----------------------------|
| ORDERING CODE | FRAME SIZE | TREE DIAMETER INCH (MM) |
| R22 | * 22" * 559 mm | 8" TO 10" 203 - 254 mm |
| R24 | * 24" 610 mm | 10" TO 12" 254 - 305 mm |
| R26 | * 26" 660 mm | 12" TO 14" 305 - 355 mm |
| R28 | 28" 711 mm | 14" TO 16" 355 - 406 mm |
| R30 | 30" 702 mm | 16" TO 18" 406 - 457 mm |
| R32 | 32" 813 mm | 18" TO 20" 457 - 508 mm |
| R34 | 34" 864 mm | 20" TO 22" 508 - 558 mm |
| R36 | 36" 914 mm | 22" TO 24" 558 - 610 mm |
| R38 | 38" 965 mm | 24" TO 26" 610 - 660 mm |
| R40 | 40" 1016 mm | 26" TO 28" 660 - 711 mm |
| R42 | 42" 1067 mm | 28" TO 30" 711 - 762 mm |

| SQUARE TREE FRAME CODES | | |
|-------------------------|-----------------------|----------------------------|
| ORDERING CODE | FRAME SIZE | TREE DIAMETER INCH (MM) |
| S21 | ** 21.5" ** 546 mm | 12" TO 14" 305 - 355 mm |
| S23 | ** 23.5" ** 597 mm | 14" TO 16" 355 - 406 mm |
| S25 | 25.5" 648 mm | 16" TO 18" 406 - 457 mm |
| S27 | 27.5" 699 mm | 18" TO 20" 457 - 508 mm |
| S29 | 29.5" 749 mm | 20" TO 22" 508 - 558 mm |
| S31 | 31.5" 826 mm | 22" TO 24" 558 - 610 mm |
| S33 | 33.5" 851 mm | 24" TO 26" 610 - 660 mm |
| S35 | 35.5" 902 mm | 26" TO 28" 660 - 711 mm |
| S37 | 37.5" 953 mm | 28" TO 30" 711 - 762 mm |
| S39 | 39.5" 1003 mm | 30" TO 32" 762 - 813 mm |
| S41 | 41.5" 1054 mm | 32" TO 34" 813 - 864 mm |

FRAME COLORS

FB—FAWN BROWN

DB—DARK BRONZE

**DBH — BRONZE
HAMMERTONE**

**LBH — BRONZE
HAMMERTONE**
NOTES:

- * R22, R23 AND R26 REQUIRE REMOTE TRANSFORMER
- ** S21 AND S23 REQUIRE REMOTE TRANSFORMER
- FRAMES ARE FURNISHED WITH STAINLESS STEEL
HARDWARE

United States Patent

